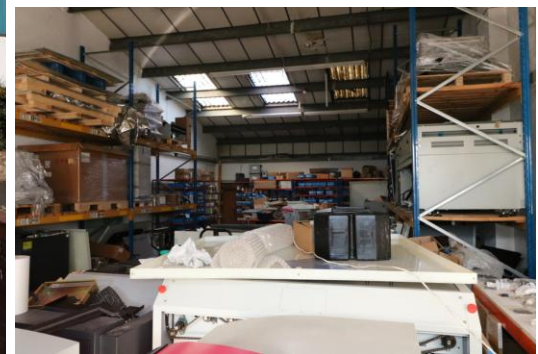




HAIR & SON
THE ESTATE OFFICE

27 Oakwood Hill,
Loughton, IG10 3TZ
INDUSTRIAL UNIT - TO LET
1,242 SQ.FT (115 SQ.M)



RENT £18,500 PAX
£1,541 PCM

SITUATION AND DESCRIPTION

Hair & Son are pleased to offer to the market this Industrial Unit which is situated on the popular Oakwood Hill Industrial Estate. The property is located within a small estate of 10 other occupants. The property consists of 1,242 SQ.FT (115 SQ.M) of open storage space with minimum eaves height of 12'.

The property further benefits from an electronically operated roller shutter and parking to the front of the property.

AVAILABLE JULY 2021.

ACCOMMODATION

Workshop/Storage Space: 1,242 SQ.FT (115 SQ.M).

Externally:

Parking to the front of the property.

DESCRIPTION

An industrial Unit consisting of 1,242 SQ.FT (115 SQ.M) of storage/workshop space with parking to the front of the unit.

RATEABLE VALUE

The rateable value is £11,250 which is chargeable at 49.6p. in the pound for the rating year to April 2021. Small business rate relieve may apply.

TERMS

The premises are to let on a new lease for a term to be agreed at a rent of £18,500 per annum exclusive.

VIEWING

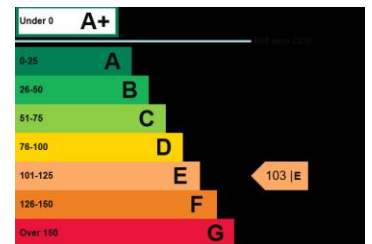
By prior appointment with Hair & Son: 01702 394959 (Option 3).

Hair & Son – 01702 394959

www.hairandson.co.uk

These particulars are accurate to the best of our knowledge but do not constitute an offer or contract. Photos are for representation only and do not imply the inclusion of fixtures or fittings. The floorplans are not to scale and only provide an indication of the layout.

Regulated by RICS



t. 01702 394959

More than an estate agent

www.hairandson.co.uk

Commercial Dept.

186 London Road
Southend-on-Sea,
Essex. SS1 1PJ

