

# CHELMSFORD

## TO LET

### Ground floor office

### 319ft<sup>2</sup> (20.91m<sup>2</sup>) - Close to City Centre.

**ROBERT DEWAR ASSOCIATES**  
**01245 350160**

- 1 Parking space
- Available now
- £195pw plus VAT



## Suite 6 Unit 8 Kingsdale Business Centre Regina Road Chelmsford CM1 1PE

### DESCRIPTION:

**Unit 8 Kingsdale Business Centre** has been converted to offer high specification offices suites planned over ground and first floors. All the offices are carpeted, have a suspended ceilings and benefit from LED lighting, comfort heating and cooling and a private alarm system. There is a communal kitchen with dishwasher and fridge appliances for each floor. There are shared male and female WCs including a disabled WC located on the ground floor. The available accommodation **Suite 6** is a small single office of approx 319sq ft located on the ground floor. Ideal for a small or new business that will benefit from nil rates payable via small business rates relief discount. The EPC rating is D-87. Visitors waiting area on ground floor. DDA compliant WC.

**RENT:** £195pw payable at £845pcm plus VAT

**RATEABLE VALUE:** £3,100- nil rates payable for eligible tenants

**APPROXIMATE SIZE:** 319ft<sup>2</sup> (29.63m<sup>2</sup>)

### LOCATION:

Kingsdale Business Estate is located at the top of Regina Road, just off Victoria Road and within easy walking distance of Chelmsford Railway Station (London Liverpool Street 35mins), Bus Station and Chelmsford City Centre.

### TERMS AND CONDITIONS:

To be let on a new 3 year lease to be outside the Landlord and Tenant Act 1954. A rent deposit of 1.5 months rent is required. Rent is inclusive of electricity, water & drainage, buildings insurance, service charge, maintenance of the common parts and the structure. The tenant will be responsible for their own business rates and IT/telephone costs.

### PARKING:

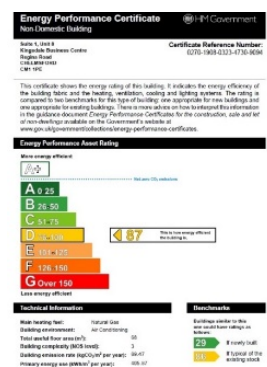
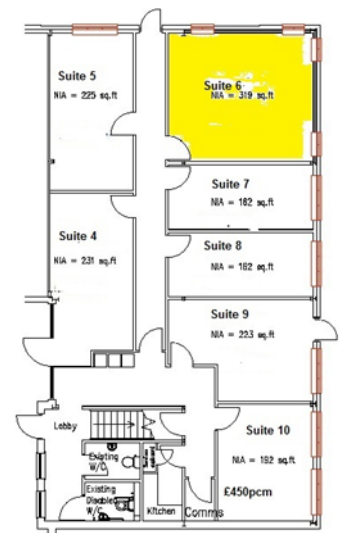
1 parking space There is also long and short term parking available nearby.

### VIEWING:

By Appointment with Robert Dewar Associates – 01245 350160 or sue@robertdewar.co.uk

## 204 NEW LONDON ROAD CHELMSFORD ESSEX CM2 9AB

**DISCLAIMER:** No responsibility is accepted as to the accuracy of these particulars or statements made by our staff concerning the above property. Robert Dewar Associates endeavor to maintain accurate descriptions of properties however, these are intended only as a guide and purchasers/lessees must satisfy themselves by personal inspection. All negotiations to be conducted through Robert Dewar Associates. Unless otherwise stated all prices and rents are quoted exclusive of VAT. These particulars do not constitute any part of an offer or contract.



propertylink

Zoopla

The Property Ombudsman