




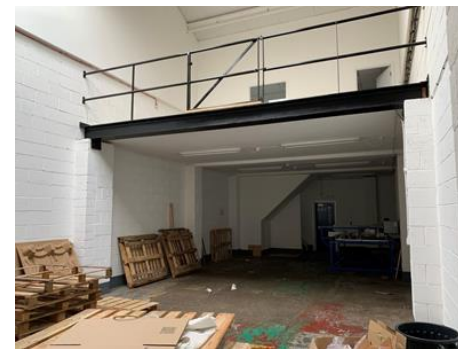
Leasehold

**Industrial Unit, Belsize House, 23
First Avenue, Milton Keynes, Bucks,
MK1 1DX**

 Leasehold – Rent On Application

 1,800 Sq Ft / 167.22 Sq M

 Industrial unit with part mezzanine, benefitting from roller shutter door and direct rear/internal access. Suitable for light industrial/manufacturing use. Free parking with free visitor parking. 24 hour CCTV coverage of all common areas and security patrols. All units fully alarmed with individual monitor to red care.



For further information
please contact:

Milton Keynes Office
01908 611408
MK16 8EN

Industrial Unit, Belsize House, 23 First Avenue, Milton Keynes,

Location

Denbigh Business Park is located in Bletchley which is an established town located 3 miles south of Milton Keynes, providing easy access to the A5, junction 14 of the M1 and has excellent rail links into London and the north.

Bletchley has attracted many large retailers including Asda and Ikea due to the extensive regeneration programme and the construction of the large sports/conference stadium, home of the MK Dons.

Terms & Tenure

Rent on application. Available on flexible licence arrangements, with its choice of 1, 12, 24 or 36 month tenures. Rents to include business rates and building insurance.

Accommodation

1800 sq ft / 167.2 sq m

VAT

All figures are quoted exclusive of VAT, purchasers and lessees must satisfy themselves as to the applicable VAT position, seeking appropriate professional advice.

EPC

The EPC rating for the property is 79 - Band D.

Costs

Each party is to be responsible for their own legal costs.

Viewing

Strictly by appointment only please contact

Kimberley Gould kimberley.gould@stimpsonseves.co.uk